



OPERATING MANUAL



PRO AS180+

Home Series | Air+Surface Sterilizer

CONTENTS



SAFETY PRECAUTIONS	1
DEVICE IDENTIFICATION	3
INSTALLATION	5
OPERATION	7
SERVICE AND MAINTENANCE	8
SPECIFICATIONS	10

Congratulations on your purchase of the **Medklinn PRO AS180+ Air+Surface Sterilizer!** It incorporates the most innovative and latest air+surface cleaning technology, the Hepafusion™ Technology. Please read the following instructions carefully before using the unit. With a little care, it will help you create a clean, fresh and healthy living space for many years.



WARNINGS - TO REDUCE THE RISK OF ELECTRICAL SHOCK, FIRE OR INJURY:

1. Do not use the device if the power cable or plug is damaged.
2. Do not insert any sharp or pointed object through the ventilation holes or any holes of the device.
3. Do not let unauthorized personnel to play with the device.
4. Do not immerse the device in water or allow water or any fluids through the ventilation holes or any holes of the device.
5. When removing the power plug, always hold the plug and never pull the cable.
6. Do not remove the power plug when your hands are wet.
7. Remove the power plug from the wall socket before cleaning the device.
8. International plugs must have proper grounding wire connected to the device.
9. Do not modify, disassemble, or repair this device without proper training and consulting the manual beforehand. Opening the device or tampering with it in any way without proper training will void the warranty. If you encounter any problem with the device, please contact the nearest authorized Medklinn Service Center.
10. Do not replace the electric plug or cut the power cable. Replacing the plug or cutting the power cable in any way will immediately cause the warranty to become void. Any subsequent fault in operation of the device will not be covered by the warranty, and repair and maintenance service will be chargeable.
11. If the power cable is damaged, contact an authorized Medklinn Service Center for repairs immediately.
12. Do not wipe the device with benzene or paint thinner.

READ AND SAVE THESE INSTRUCTIONS.

FOR FURTHER ASSISTANCE, PLEASE CALL OUR CUSTOMER SERVICE.





NOTE – RISK OF INTERFERENCE AND OTHER POSSIBLE DISRUPTIONS

1. If the device interferes or disrupts with other electronic equipment and/or machineries, attempt one or more of the following measures:
 - Relocate or increase the distance between the device and the electronic equipment and/or machineries.
 - Connect the electronic equipment and/or machineries into a separate outlet different from the device.
 - Consult the dealer or experienced electronic equipment and/or machineries' technician for help.
2. Place the device at least 6 feet from any electronic equipment and/or machineries. This is to minimize the possibility of interference or other possible disruptions with the electronic equipment and/or machineries.
3. If both the device and other electronic equipment and/or machineries cannot be relocated, do perform regular checking on both the device and other electronic equipment and/or machineries to ensure no interference and other possible disruptions occur.

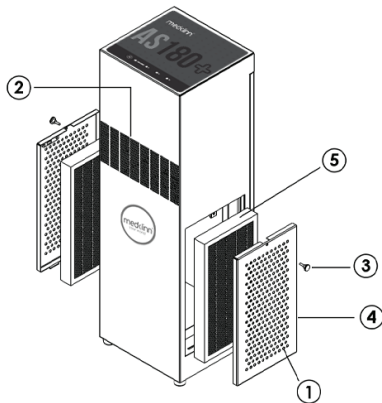


CAUTIONS DURING OPERATION

1. Do not cover the device in any way at all, particularly the ventilation holes. Doing so will cause excessive heat build-up and may result in a fire or irreparable damage to the device.
2. Avoid placing the device where curtains or other furnishings may cover the ventilation holes or any holes of the device.
3. Avoid placing the device in oily or high humidity environment as these conditions may affect the performance.
4. Ensure that there is free flow of air around the device.
5. Avoid locations where the device is exposed to condensation due to rapid and drastic temperature fluctuations. The device should only be used in temperatures between 5°C-35°C.
6. Active Oxygen is very reactive, hence oxidation may occur on surfaces such as painted, chrome and glossy surfaces. To minimize this, do not place the device directly against walls or other surfaces, and leave a space of at least two (2) meters around these surfaces.
7. Place the device at least two (2) meters away from your sitting or sleeping area to ensure optimal performance and comfort.
8. Do not place the device in enclosed or poorly ventilated spaces, such as inside cupboards or cages, as this can obstruct airflow, reduce filtration and sterilization effectiveness, and may cause damage to the device.

DEVICE IDENTIFICATION

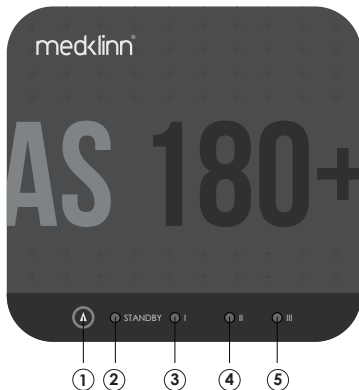
FRONT VIEW



- ① Ventilation Holes (Air Inlet)
- Air inlet from environment.
- ② Ventilation Holes (Active Oxygen Outlet)
- Active Oxygen is disbursed through the outlet.
- ③ Hand Screw
- To secure the side cover
- ④ Side Cover
- To provide ventilation and secure the air filter in place
- ⑤ Air Filter
- To filter pollutants

DEVICE IDENTIFICATION

TOP VIEW

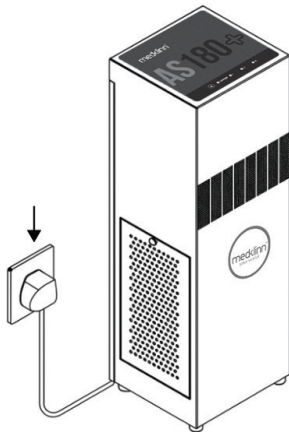


- ① Control Button
- To select operation mode.
- ② LED light Standby
- Operation mode is STANDBY.
- ③ LED light I
- Operation mode is LOW.
- ④ LED light II
- Operation mode is MID.
- ⑤ LED light III
- Operation mode is HIGH.

INSTALLATION

1. PLUG IN THE DEVICE AND TURN ON THE POWER.

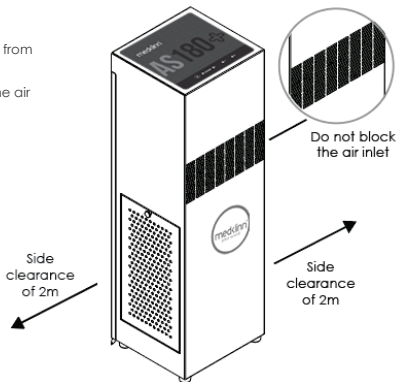
The Standby LED will light up automatically, indicating that the device is ready for use.



INSTALLATION

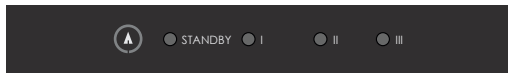
2. DEVICE PLACEMENT GUIDE:

- A. Device needs a minimum clearance radius of two (2) meters from any objects or electrical device to avoid interference.
- B. Make sure the ventilation holes face forward. Do not block the air inlet.



OPERATION

1. Turn on the power. The Standby LED will light up automatically.
2. Press the control button to cycle through the modes (LOW -> MID -> HIGH)
3. To activate Filter mode, press and hold the control button for 3 second until all LED lights turn on.
4. To exit Filter mode, press and hold the control again for 3 seconds to return to normal operation.



Control Button

SERVICE & MAINTENANCE

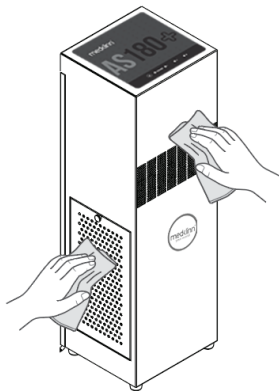
1. To maintain its optimal performance, clean the device at least once a month and replace the air filter every six months. Filter replacement may vary based on air pollution levels.



CAUTION: SWITCH OFF AND UNPLUG THE UNIT BEFORE CLEANING

A. CLEANING THE EXTERIOR PART OF DEVICE:

- i. Turn off the power and unplug the device. Make sure the LED light is off.
- ii. Wipe the device gently with a slightly damp cloth.
- iii. Ensure ventilation holes are free of dust and dirt.

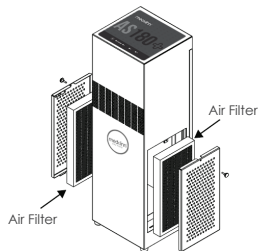


SERVICE & MAINTENANCE

B. REPLACING AIR FILTER

- i. Turn off the power and unplug the device. Make sure the LED light is off.
- ii. Unscrew and remove the side cover.
- iii. Remove the used filter and insert a new one.
- iv. Reattach the side cover and tighten the screw securely.

NOTE: Make sure the side cover is properly closed. The device will remain in standby mode if the cover is not installed correctly.



2. Annual preventive maintenance for the Medklinn Air+Surface Sterilizers is required to ensure optimal performance, otherwise it may experience malfunction or possibly cause damage to internal components.

FOR ANNUAL PREVENTIVE MAINTENANCE ARRANGEMENTS, PLEASE CONTACT AN AUTHORIZED MEDKLINN SERVICE CENTRE.

SPECIFICATIONS

MODEL	PRO AS180+
Coverage Area	Up to 1,000 sq ft
Input Voltage	110-240 VAC
Input Current (max)	0.07 A
Power Consumption	<17 W
Settings	LOW/ MID/ HIGH/ FILTER
Dimensions (mm)	197(W) x 191(D) x 618(H)
Operating Environment	Temperature 10°-35°C
Weight	8 kg
Warranty	3 years limited

For more information, please login to www.medklinn.com

Powered by **HEPA***fusion*